



# NeuroLF<sup>®</sup>

## Dedicated Brain PET System

- > Ultra-compact
- > Easy to use
- > High Patient Comfort
- > Affordable





# NeuroLF<sup>®</sup> System A new generation of brain imaging excellence

The **detector ring** is the heart of NeuroLF and allows with an axial field of view of 16.3 cm to scan entire brain.

The **seat** offers a comfortable position and thanks to various stabilization aids the patient movement can be reduced.

NeuroLF is based on a **customer-centric design** which makes it very user friendly and intuitive to use.

The **scanning unit** can be detached from the seat and allows for a fast and smooth installation.



## IMAGING EVERYONE

- Hoffman phantom acquired with NeuroLF system
- Acquisition: activity 37.9MBq, 20 minutes acquisition time
- Reconstruction: random, attenuation and scatter correction; 3 × 3 × 3 median filter, reconstruction time less than 15 minutes



sagittal



transverse



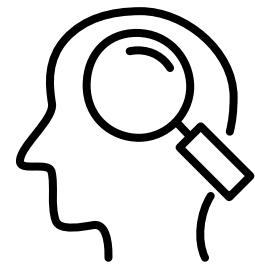
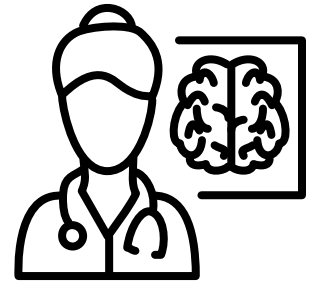
coronal

Scan QR-Code to watch NeuroLF video

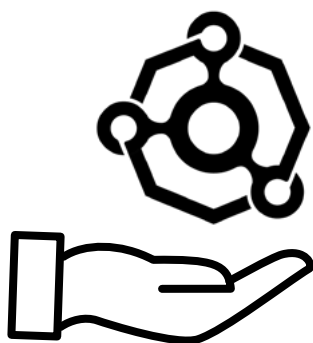


## The Opportunity

- > High versatility, **NeuroLF** can be used with various tracers
- > For research and clinical routine
- > Allows for optimal patient flow
- > High cost-effectiveness, attractive ROI



- > Alzheimer's Disease
- > Neuro-Oncology
- > Epilepsy
- > Movement Disorders



## Why NeuroLF?

- > First commercially available system of its kind in the US and the European Union with FDA and CE mark
- > State-of-the Art performance
- > Customer-centric design guarantees high comfort and ease of use
- > Simple and fast installation process without major room construction
- > Low power consumption reduces the environmental impact



# POSITRIGO

IMAGING EVERYONE

## CONTACT

✉ Positrigo AG (Headquarter)  
Technoparkstrasse 1  
8005 Zurich  
Switzerland

☎ +41 44 51 55 330

💻 [info@positrigo.com](mailto:info@positrigo.com)

✉ Positrigo Inc (US Subsidiary)  
PO Box  
Manchester, VT  
USA

☎ (800) 590 - 6984

💻 [usa@positrigo.com](mailto:usa@positrigo.com)

